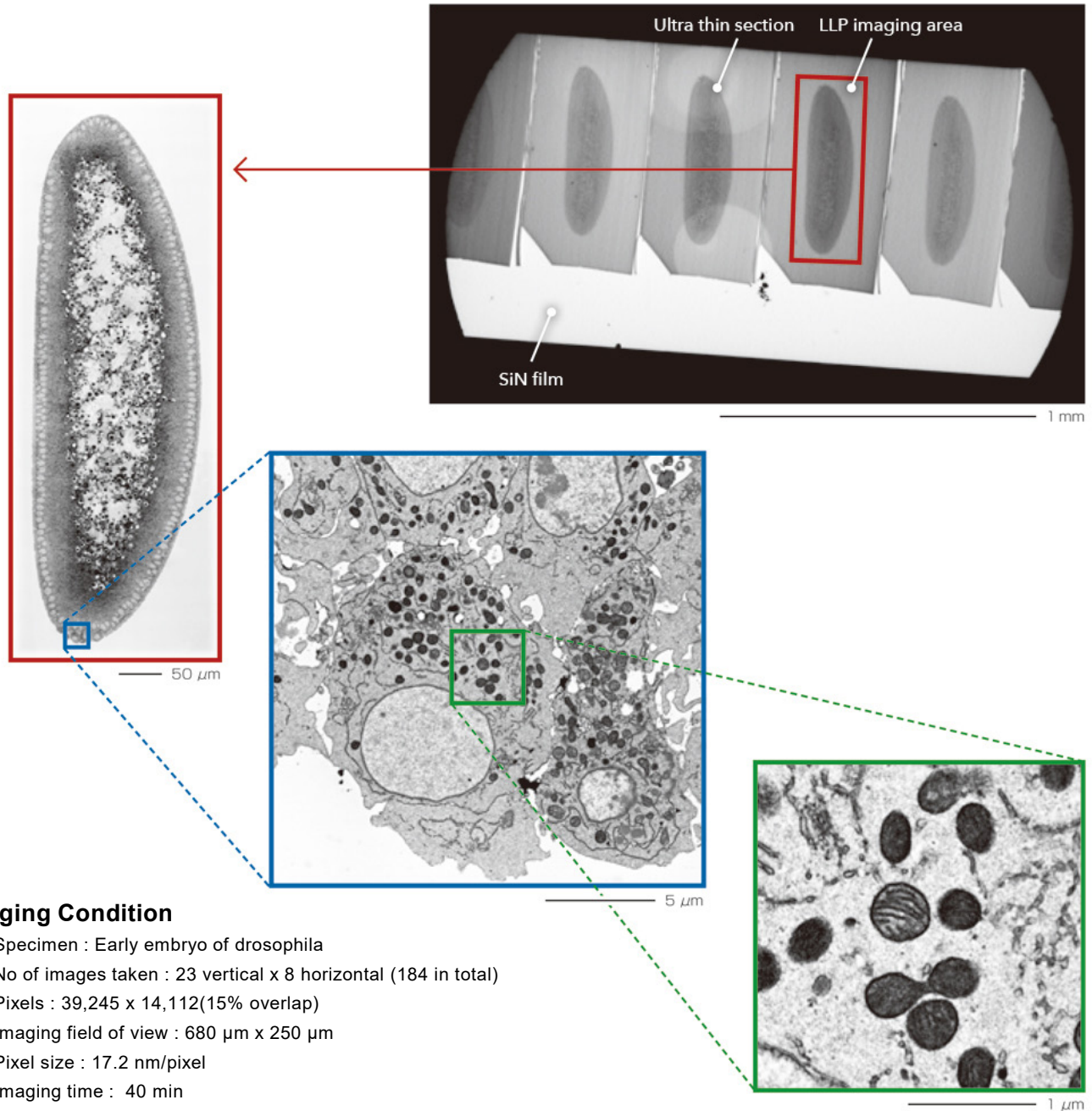


Wide Area Observation by Using SiN Window Chip

Product Used : Transmission Electron Microscope (TEM)

An ultra wide highly precise image (pixels: approx. 5,500 million, pixel size: approx. 17 nm) is obtained by using the automatic montage system "Limitless Panorama (LLP)" function. The combination of a SiN Window Chip with an LLP, enables imaging of the area allowing for observation of the entire embryo, while maintaining the resolution allowing for observation of organelles.



Imaging Condition

- Specimen : Early embryo of drosophila
- No of images taken : 23 vertical x 8 horizontal (184 in total)
- Pixels : 39,245 x 14,112(15% overlap)
- Imaging field of view : 680 μm x 250 μm
- Pixel size : 17.2 nm/pixel
- Imaging time : 40 min
- Imaging device : JEM-1400Flash (Accelerating voltage : 120 kV)

【Reference】

Y. KOnyuba et al., *Microscopy* **67** (2018) 367-370.

Copyright © 2022 JEOL Ltd.

Certain products in this brochure are controlled under the "Foreign Exchange and Foreign Trade Law" of Japan in compliance with international security export control. JEOL Ltd. must provide the Japanese Government with "End-user's Statement of Assurance" and "End-use Certificate" in order to obtain the export license needed for export from Japan. If the product to be exported is in this category, the end user will be asked to fill in these certificate forms.

